



# Pressure Gauges & Thermometers



*Many Products...One Source*



Dedicated  
Sales Rep  
for Your Area



97%  
Fill Rate



Shipping  
within  
24 Hours



State of the Art  
Warehouse  
System



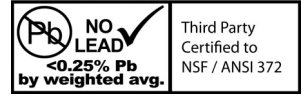
Technical  
Support



Quality  
Control  
Program

# PRESSURE GAUGES - LIQUID FILLED

- General Purpose - not for use with oxygen
- Polycarbonate Window
- Glycerine Filled
- Bourdon Tube
- Ambient Operating Temperature: -4 to 140°F (-20 to 60°C)



## 2" DIAL PRESSURE GAUGES - LIQUID FILLED - LOWER & CENTER BACK MOUNT

- Accuracy: 3% - 2% - 3% Grade B
- Ideal for use where vibration or pressure pulsation occurs
- Brass or Lead Free Brass Connection
- Steel Case
- Acrylic Window
- Maximum Media Temperature: 140°F (60°C)
- Available up to 200 PSI



## 2" DIAL STAINLESS STEEL PRESSURE GAUGES - LIQUID FILLED - LOWER & CENTER BACK MOUNT

- Accuracy: 3% - 2% - 3% Grade B
- Ideal for use where vibration or pressure pulsation occurs
- 304 Stainless Steel Case w/ vent plug
- Stainless Steel Internals and Connection
- Maximum Media Temperature: 212°F (100°C)
- Available 0-100 PSI



## 2-1/2" DIAL PRESSURE GAUGES - LIQUID FILLED - LOWER & CENTER BACK MOUNT

- Accuracy: +/- 1.5% Full Scale Value
- Ideal for use where vibration or pressure pulsation occurs
- 304 Stainless Steel Case w/ vent plug
- Brass or Lead Free Brass Connection
- Gauges 15 to 600 PSI are tapped for a Restrictor Screw (not included)
- 1000 PSI or more are tapped and include Restrictor Screw
- Maximum Media Temperature: 140°F (60°C)
- Available up to 600 PSI Lead Free Brass
- Available up to 10000 PSI Brass



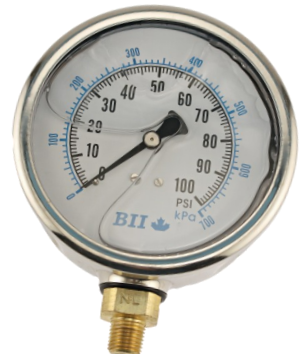
## 2-1/2" DIAL STAINLESS STEEL PRESSURE GAUGES - LOWER & CENTER BACK MOUNT

- Accuracy: +/- 1.5% Full Scale Value
- Ideal for use in corrosive environments
- 304 Stainless Steel Case w/ vent plug
- Stainless Steel Internals and Connection
- Dry and Glycerine Filled
- Maximum Media Temperature: 212°F (100°C)
- Gauges 15 to 600 PSI are tapped for a Restrictor Screw (not included)
- 1000 PSI or more (are tapped & include Restrictor Screw)
- Available up to 10000 PSI



## 4" DIAL PRESSURE GAUGES - LIQUID FILLED - LOWER MOUNT

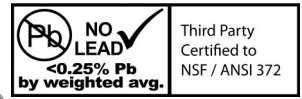
- Accuracy: +/- 1.5% Full Scale Value
- Ideal for use where vibration or pressure pulsation occur
- 304 Stainless Steel Case w/ vent plug
- Brass or Lead Free Brass Connection
- Maximum Media Temperature: 140°F (60°C)
- Available up to 10000 PSI





## PRESSURE GAUGES

- Accuracy: 3% - 2% - 3% Grade B
- General Purpose - not for use with oxygen
- Brass or Lead Free Brass Connection
- Acrylic Window
- Bourdon Tube
- Ambient Operating Temperature: 32 to 104°F (0 to 40°C)
- Maximum Media Temperature: 104°F (40°C)



### 1-1/2" & 2" DIAL PRESSURE GAUGES - CENTER BACK MOUNT

- Brass or Lead Free Brass Male NPT Connection
- Steel or ABS Case
- Available up to 200 PSI

### 2" DIAL PRESSURE GAUGES - LOWER MOUNT

- Brass or Lead Free Brass Connection
- Steel or ABS Case
- Available up to 300 PSI

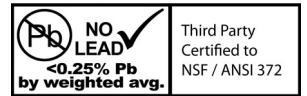
### 2-1/2" DIAL PRESSURE GAUGES - LOWER MOUNT

- Steel Case
- Available up to 600 PSI

## 2-1/2" DIAL LOW PRESSURE GAUGES

### 2-1/2" DIAL LOW PRESSURE GAUGES - LOWER MOUNT

- Accuracy: +/- 1.5% Full Scale Value
- General Purpose - not for use with oxygen
- Ambient Operating Temperature: -4 to 140°F (-20 to 60°C)
- Ideal for use in low pressure pneumatic systems
- For accurate measurement shown in inches of water (1/2 thru 10 PSI)
- Brass Connection
- Zero adjustment screw on dial
- Steel Case
- Acrylic Window
- Maximum Media Temperature: 140°F (60°C)
- Gauges are tapped and include Restrictor Screw



## 4" DIAL PRESSURE GAUGES

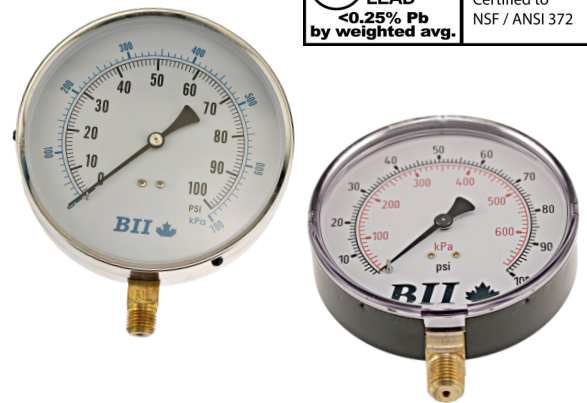
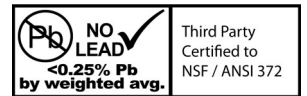
- General Purpose - not for use with oxygen
- Acrylic Window
- Bourdon Tube
- Ambient Operating Temperature: -4 to 140°F (-20 to 60°C)
- Maximum Media Temperature: 140°F (60°C)
- Available up to 600 PSI

### 4" DIAL PRESSURE GAUGES - LOWER MOUNT

- Accuracy: +/- 2.5% Full Scale Value
- Brass Connection
- Steel Case

### 4-1/2" DIAL CONTRACTOR GAUGES - LOWER MOUNT

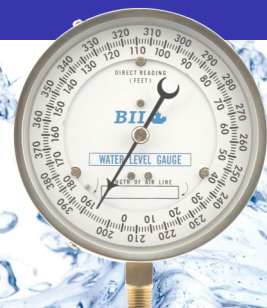
- Accuracy: +/- 1% Full Scale Value
- Extra large dial face with re-adjustable pointer
- Brass or Lead Free Brass Connection
- 304 Stainless Steel Case and bezel
- Gauges 15 to 600 PSI are tapped for a Restrictor Screw (not included) 1000 PSI or more (are tapped & include Restrictor Screw)



## WATER LEVEL GAUGE

### WATER LEVEL GAUGE

- Accuracy: +/- 3% - 2% - 3%
- Used to monitor the depth of water in a well.
- 4-1/2" Aluminum rotating dial
- Brass 1/4" LM Connection
- Acrylic Window
- 304 Stainless Steel Case & bezel with side screws
- Brass pointer with black finish
- Bourdon tube - phosphor bronze, soft soldered



## TESTING GAUGES & ACCESSORIES

### **WATER TEST GAUGES / MAX PRESSURE INDICATOR GAUGE**

- Provides a quick and easy way to test water system pressure
- Available with maximum pressure indicator to register highest reading for detection of pressure surges
- 3/4" garden hose connection

### **GAS TEST GAUGES**

- Provides a quick and easy means of pressurizing and monitoring a gas system for leakage
- Gauges are assembled with a chrome plated steel hex manifold and air valve
- 3/4" FPT connection
- Available assembled complete with pressure gauge and air valve, or manifold and air valve only

### **GAS TEST MANIFOLD COUPLING**

- Trouble free alternative to test gas systems
- Black malleable iron 3/4" x 1/4" reducer
- Coupling drilled and tapped 1/8"
- Available assembled complete with pressure gauge and snifter (air) valve or coupling only



## THERMOMETERS & TRIDICATORS

### **2-1/2" & 3" DIAL TRIDICATORS**

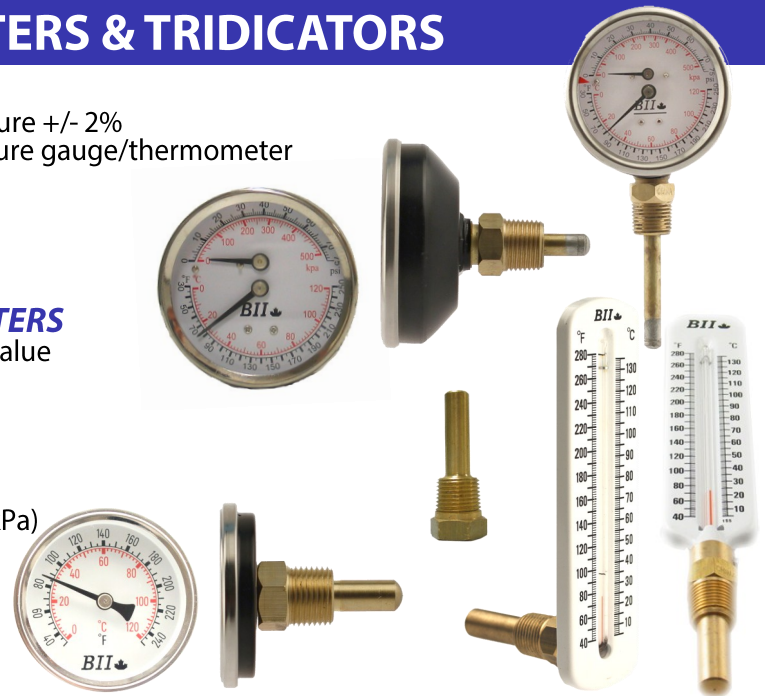
- Accuracy: Pressure +/- 3% - 2% - 3% Temperature +/- 2%
- General purpose industrial combination pressure gauge/thermometer
- Bourdon tube and Coiled bi-metal element
- Red (2-1/2" ) or Black (3" ) Steel Case
- Brass Connection • Acrylic Window
- 3" Dial face comes with adjustable indicator

### **2-1/2" & 3" DIAL BI-METAL THERMOMETERS**

- Accuracy: +/- 2% Working Range - Max Scale Value
- General purpose industrial thermometer
- Coiled bi-metal element
- Aluminum case
- Brass or Stainless Steel Thermowell
- Acrylic Window
- Thermowell Max Pressure Rating: 87 PSI (600 kPa)

### **HOT WATER THERMOMETERS**

- General purpose use with hot water
- Red Organic Kerosene Liquid
- Brass Thermowell



## GAUGE ACCESSORIES

### **PANEL MOUNT FLANGES**

### **RESTRICTOR SCREW**

### **REFILL GLYCERINE**

### **BRASS SNUBBERS - BRASS SNUBBING ELEMENT**

### **PIG TAIL SYPHONS**



25 Whaley Ave., PO Box 310  
Milverton, ON, N0K 1M0  
CANADA  
Tel: (519)-595-4444  
Fax: (519)-595-4380  
Toll Free: (800)-561-3164  
**www.boshart.com**



**Distributed By:**